

619-621 Hume Hwy, Casula, NSW 2170

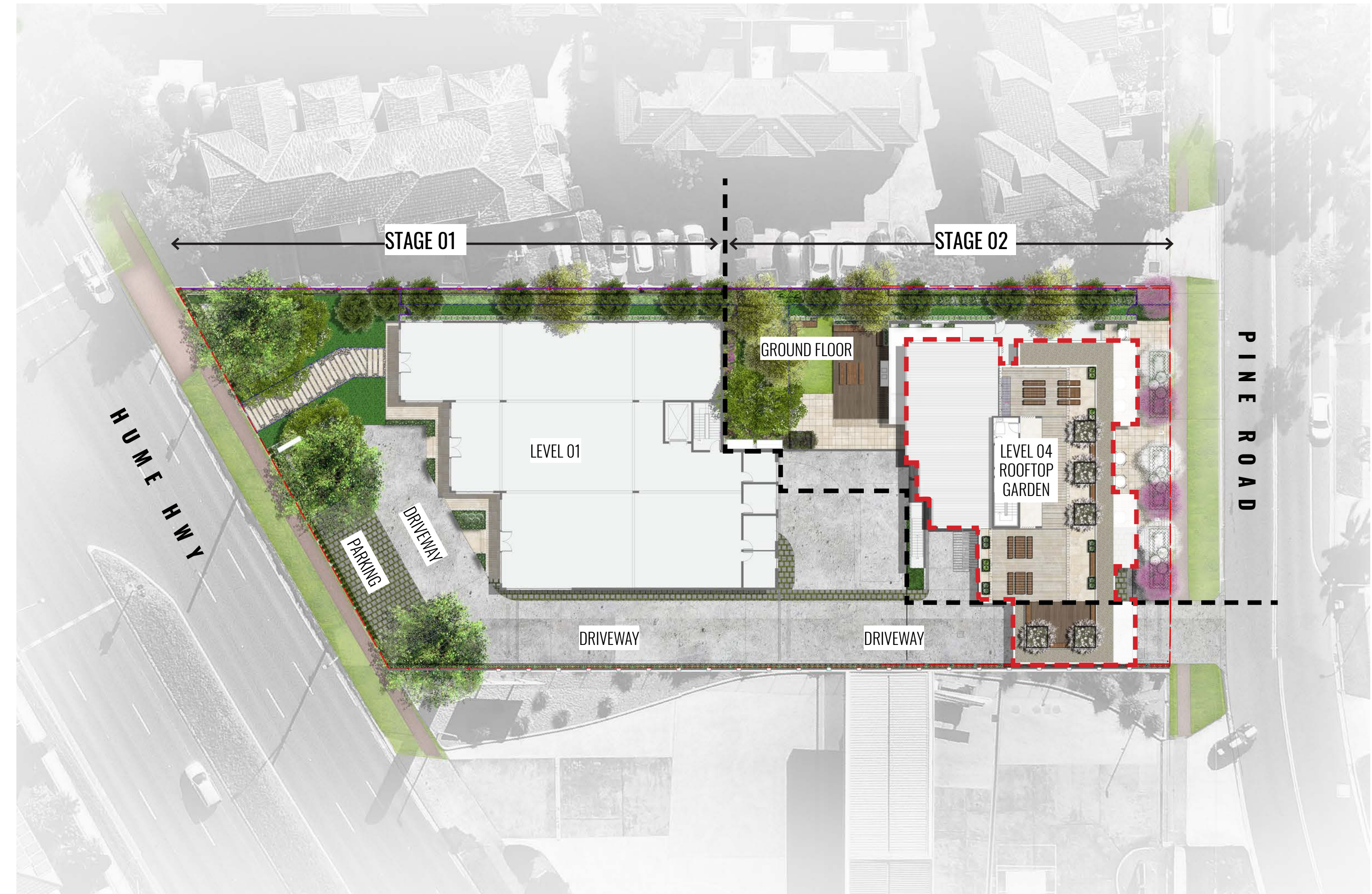
Landscape Documentation for Development Application



IMAGE TAKEN FROM NEARMAP 2020

Drawing Register

Dwg No.	Drawing Name
LDA-00	Cover Sheet
LDA-01	Landscape Plan - Stage 01
LDA-02	Landscape Plan - Stage 02
LDA-03	Landscape Plan - Rooftop Garden (Level 04)
LDA-04	Specification & Detail
LDA-05	Planting Schedule & Imagery



SITE PLAN

Drawing Title:
Landscape Cover Sheet
DWG No:

LDA-00


GEOSCAPES
LANDSCAPE ARCHITECTS

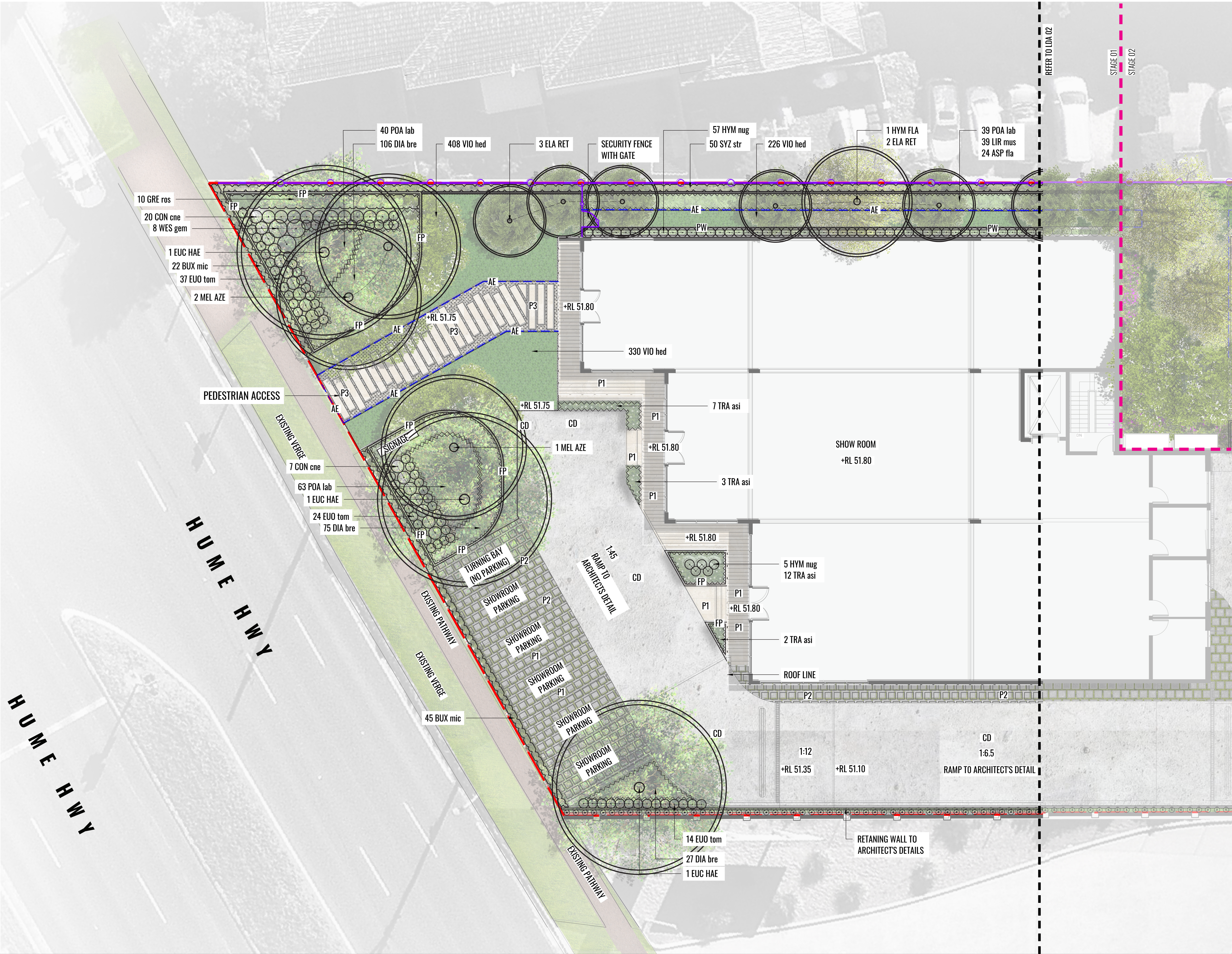
Suite 215, 284 Victoria Ave, Chatswood NSW 2067 Ph. (02) 9411 1485
www.geoscapes.com.au
ABN 84 620 205 781 ACN 620 205 781

Architect:

**DREAMSCAPES**
ARCHITECTS

Client:


Scale:	Date:	Job Number:	North:	Revision					FOR DEVELOPMENT APPLICATION	
1:75 @ A1 1:150 @ A3	03.08.2021	181004		Rev	Date	Description	Drawn	Checked		
Project:	619-621 Hume Hwy, Casula NSW 2170			A	21.06.19	FOR DA	SW	BG		
				B	08.07.19	FOR DA	SW	BG		
				C	04.09.20	REVISED FOR DA	SB	BG		
				D	03.08.21	REVISED DA	TW	BG		



LEGEND

SITE BOUNDARY

+RL 48.60

RELATIVE LEVEL

+TOW 48.60

TOP OF WALL LEVEL

PROPOSED SHRUBS

PROPOSED TREES

MASS HEDGE/SHRUB PLANTING

PROPOSED GROUNDCOVER PLANTING

PROPOSED CLIMBERS ON VERTICAL TENSILE WIRES OR TRELLIS FRAME

TURF

TURF

P1

PAVING TO ARCHITECT'S DETAILS

P2

PERMEABLE PAVING TO ARCHITECT'S DETAILS

TD

TIMBER DECK TO ARCHITECT'S DETAILS

CD

CONCRETE DRIVEWAY TO ARCHITECTS DETAILS

DECORATIVE PEBBLE MULCH

P3

LONG STEPPING PAVERS

TS

TABLE SETTING

TB

TIMBER BENCH

FP

0.5M METER HIGH CONCRETE FIXED PLANTER BOX

PW

PLANTER WALL

AE

ALUMINIUM EDGE

PROPOSED BLADE FENCE
REFER TO ARCHITECT'S DWG

EXISTING COLORBOND FENCE

SLIDING VEHICULAR BARRIER
REFER TO ARCHITECT'S DWG

PT

DRAINAGE PIT TO HYDRAULIC ENGINEER'S DETAIL

RWT

RAIN WATER TANK TO HYDRAULIC ENGINEER'S DETAIL

Drawing Title:
Landscape Plan- Stage 01
DWG No:

LDA-01

GEOSCAPES


LANDSCAPE ARCHITECTS

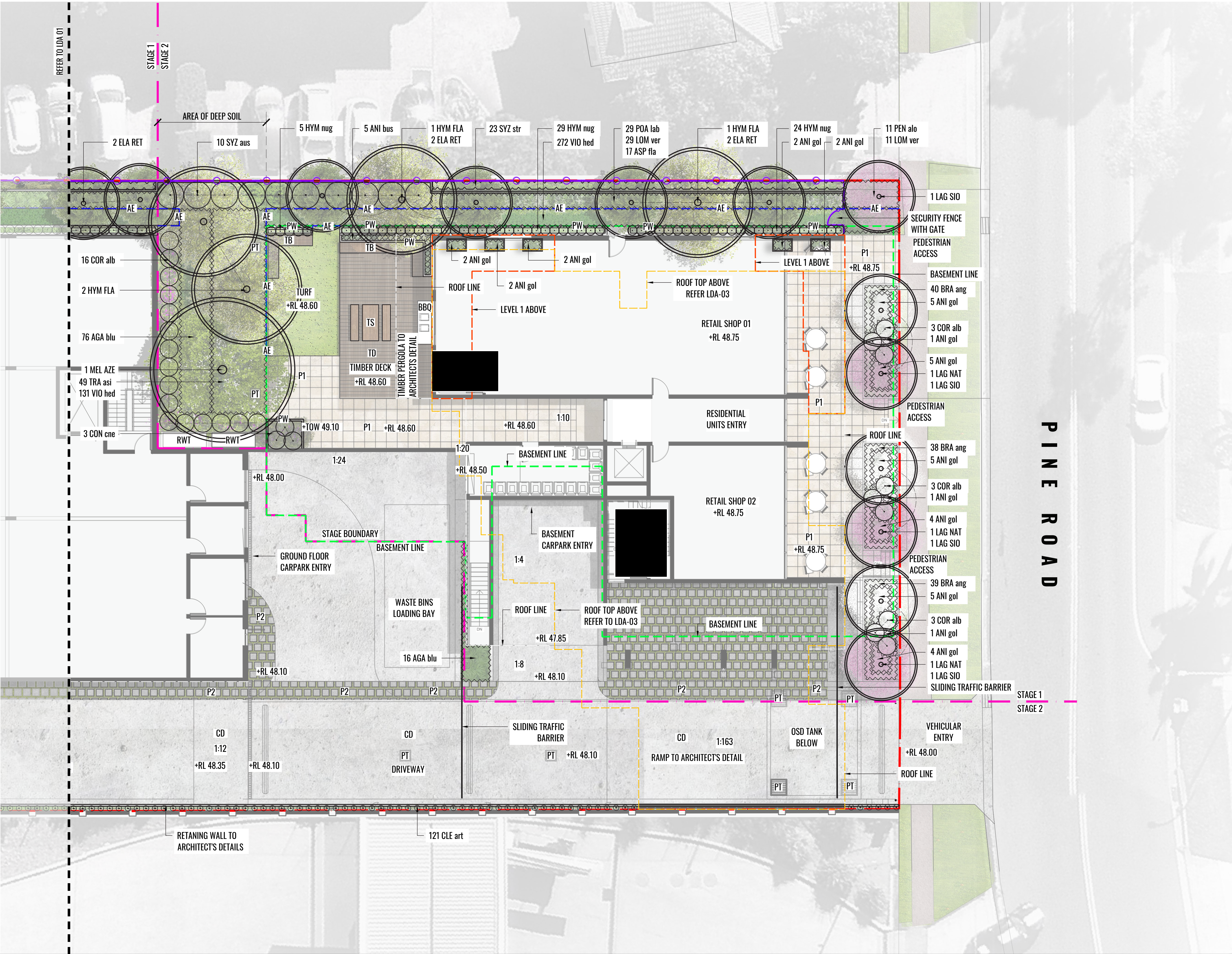
Suite 215, 284 Victoria Ave, Chatswood NSW 2067 Ph. (02) 9411 1485
www.geoscapes.com.au
ABN 84 620 205 781 ACN 620 205 781

Architect:

DREAMSCAPES ARCHITECTS

Client:

Scale:	Date:	Job Number:	North:	Revision					FOR DEVELOPMENT APPLICATION	
1:100@ A1	03.08.2021	181004		Rev	Date	Description		Drawn	Checked	
1:200 @ A3				A	21.06.19	FOR DA		SW	BG	
				B	08.07.19	FOR DA		SW	BG	
Project:	619-621 Hume Hwy, Casula	NSW 2170		C	04.09.20	REVISED FOR DA		SB	BG	
				D	03.08.21	REVISED DA		TW	BG	



LEGEND

SITE BOUNDARY

+RL 48.60

RELATIVE LEVEL

+TOW 48.60

TOP OF WALL LEVEL

PROPOSED SHRUBS

PROPOSED TREES

MASS HEDGE/SHRUB PLANTING

PROPOSED GROUNDCOVER PLANTING

PROPOSED CLIMBERS ON VERTICAL TENSILE WIRES OR TRELLIS FRAME

TURF

P1

PAVING TO ARCHITECT'S DETAILS

P2

PERMEABLE PAVING TO ARCHITECT'S DETAILS

TD

TIMBER DECK TO ARCHITECT'S DETAILS

CD

CONCRETE DRIVEWAY TO ARCHITECT'S DETAILS

DECORATIVE PEBBLE MULCH

P3

LONG STEPPING PAVERS

TS

TABLE SETTING

TB

TIMBER BENCH

FP

0.5M METER HIGH CONCRETE FIXED PLANTER BOX

PW

PLANTER WALL

AE

ALUMINIUM EDGE

PROPOSED BLADE FENCE REFER TO ARCHITECT'S DWG

EXISTING COLORBOND FENCE

SLIDING VEHICULAR BARRIER REFER TO ARCHITECT'S DWG

PT

DRAINAGE PIT TO HYDRAULIC ENGINEER'S DETAIL

RWT

RAIN WATER TANK TO HYDRAULIC ENGINEER'S DETAIL

Drawing Title:
Landscape Plan- Stage 02
DWG No:

LDA-02

GEOSCAPES

LANDSCAPE ARCHITECTS

Suite 215, 284 Victoria Ave, Chatswood NSW 2067 Ph. (02) 9411 1485

www.geoscapes.com.au

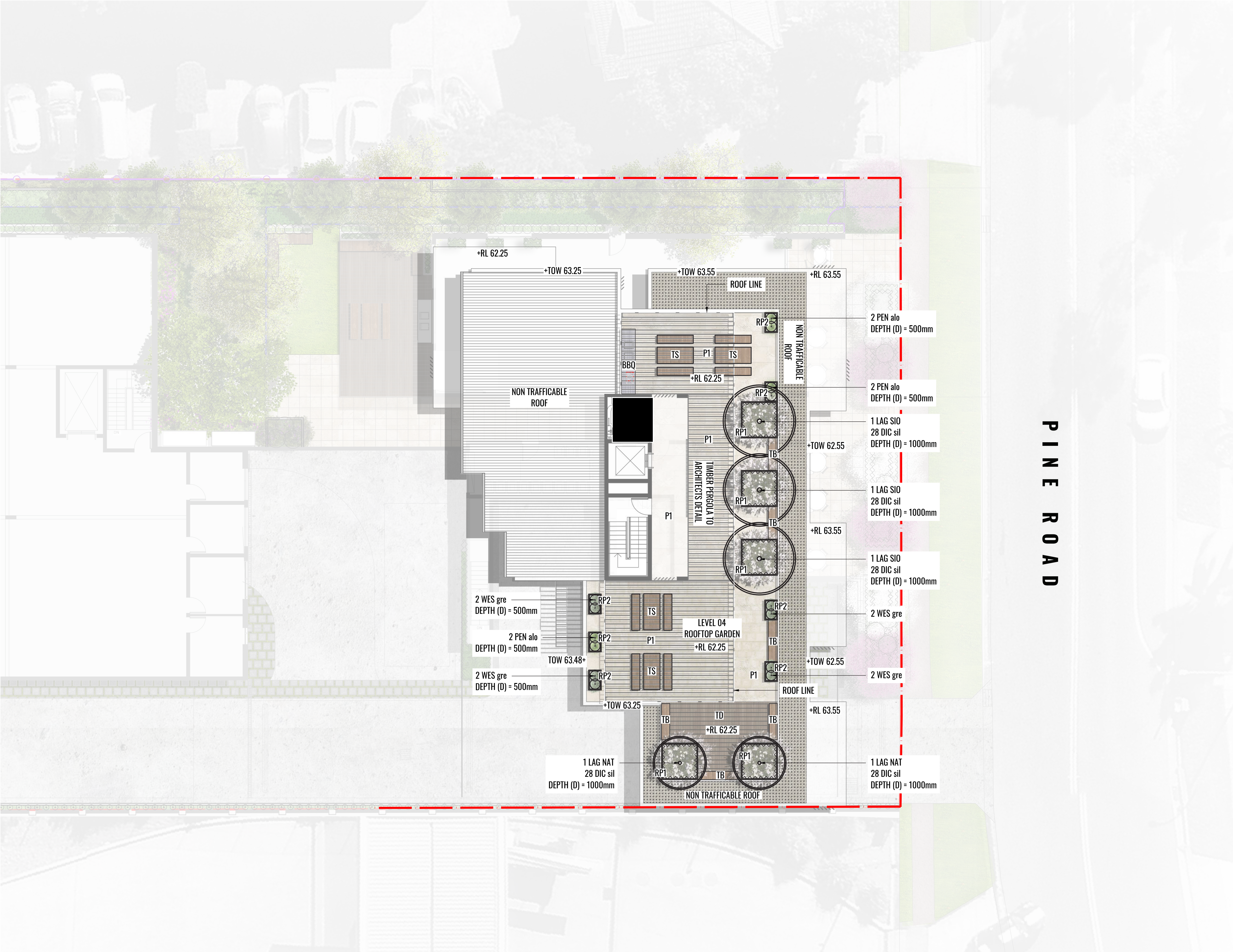
ABN 84 620 205 781 ACN 620 205 781

Architect:

DREAMSCAPES ARCHITECTS

Client:

Scale: 1:100 @ A1 1:200 @ A3	Date: 03.08.2021	Job Number: 181004	North: 	FOR DEVELOPMENT APPLICATION				
Project: 619-621 Hume Hwy, Casula NSW 2170				Revision	Date	Description	Drawn	Checked
				A	21.06.19	FOR DA	SW	BG
				B	08.07.19	FOR DA	SW	BG
				C	04.09.20	REVISED FOR DA	SB	BG
				D	03.08.21	REVISED DA	TW	BG



LEGEND

- SITE BOUNDARY
- RELATIVE LEVEL
- TOP OF WALL LEVEL
- PROPOSED SHRUBS
- PROPOSED GROUNDCOVER PLANTING
- PAVING TO ARCHITECT'S DETAILS
- TIMBER DECK TO ARCHITECT'S DETAILS
- LARGE PEBBLES TO NON-TRAFFICABLE ROOF
- TABLE SETTING
- TIMBER BENCH
- PROPOSED ROOFTOP BOX TYPE 1
SIZE: 2000mm (L) X 2000mm (W) X 1000mm (D)
- PROPOSED ROOFTOP BOX TYPE 2
SIZE: 1000mm (L) X 700mm (W) X 500mm (D)
- PERGOLA TO ARCHITECT'S DETAIL

PINE ROAD

Drawing Title:
Landscape Plan- Rooftop Garden (Level 04)
DWG No:
LDA-03

GEOSCAPES
LANDSCAPE ARCHITECTS
Suite 215, 284 Victoria Ave, Chatswood NSW 2067 Ph. (02) 9411 1485
www.geoscapes.com.au
ABN 84 620 205 781 ACN 620 205 781

Architect:
DREAMSCAPES
ARCHITECTS

Client:

Scale: 1:100@ A1
1:200 @ A3
Date: 03.08.2021
Job Number: 181004
Project: 619-621 Hume Hwy, Casula
NSW 2170

Revision			FOR DEVELOPMENT APPLICATION	
Rev	Date	Description	Drawn	Checked
A	21.06.19	FOR DA	SW	BG
B	08.07.19	FOR DA	SW	BG
C	04.09.20	REVISED FOR DA	SB	BG
D	03.08.21	REVISED DA	TW	BG

MAINTENANCE PLAN

Maintenance shall mean the care and maintenance of the landscape works by accepted horticultural practice as rectifying any defects that become apparent in the landscape works under normal use. The landscape contractor shall attend the site on a **weekly basis** to maintain the landscape works commencing from practical completion.

Rubbish Removal

The Landscape Contractor shall undertake rubbish removal from the site on a **weekly basis** to ensure the site remains in tidy condition.

Weed Eradication

Weed growth that may occur in grassed, planted or mulched areas is to be removed using environmentally acceptable methods i.e. non-residual glyphosate herbicide (e.g. ‘Roundup’, applied in accordance with the manufacturer’s direction.

Tree Replacement

Trees shall show signs of healthy vigorous growth and be free from disease and not exhibit signs of stress prior to handover to the client. Any trees or plant that die or fail to thrive, or are damaged or stolen will be replaced. Replacement material shall have the initial maintenance period extended in accordance with the landscape contract conditions. Trees and plant materials shall be equal to the minimum requirements of species specified and approved material delivered to site. Should the condition decline from the approved sample the Superintendent reserves the right to reject the tree / plants. Frequency: as required.

Stakes

Adjust and/or replace stakes and ties where required. Remove staking and guying when instructed by the Superintendent

Pruning

Selective pruning may be required during the establishment period to promote a balanced canopy structure. These activities shall be carried out to the best horticultural and industry practice. All pruned material is to be removed from site.

Mulched Surfaces

All planter beds and garden areas shall have a minimum depth of 75mm organic mulch. All mulch is to be free of deleterious matter such as soil, weeds, sticks and should conform to AS 4454. Mulched surfaces are to be kept clean and tidy and free of any deleterious material and foreign matter. Reinstate depths to a uniform level of 75mm with mulch as specified, mulch to be free of any wood material impregnated with CCA or similar toxic treatment. Top up mulch levels prior to handover to client & estate management.

Watering

Implement an appropriate hand watering regime in areas not irrigated in association with current watering programme to maintain plant health and vigour. The program shall reflect seasonal conditions and plant species. Frequency: Weekly or as required.

Soil In Natural Ground

Non-Australian native garden beds to have soil installed consisting of 50% existing site topsoil and 50% new topsoil equal or equivalent to ‘Organic Garden Mix’ as supplied by Australian Native Landscapes. Australian native garden beds to have soil installed consisting of 50% existing site topsoil and 50% new topsoil equal or equivalent to ‘Native Low ‘P’ Mix’ as supplied by Australian Native Landscapes. Soil to conform to AS4419 refer to typical detail.

Pest and Disease Control

The Landscape Contractor shall spray for pests and disease infestations when the pest and fungal attack has been positively identified and when their populations have increased to a point that will become detrimental to plant growth. Apply all pesticides to manufacturer’s directions. Frequency: weekly inspection

Fertilising

Generally check for signs of nutrient deficiencies (yellowing of leaves, failure to thrive), and adapt fertiliser regime to suit. Fertiliser should be applied at the beginning and the end of the (summer) growing season.

Irrigation

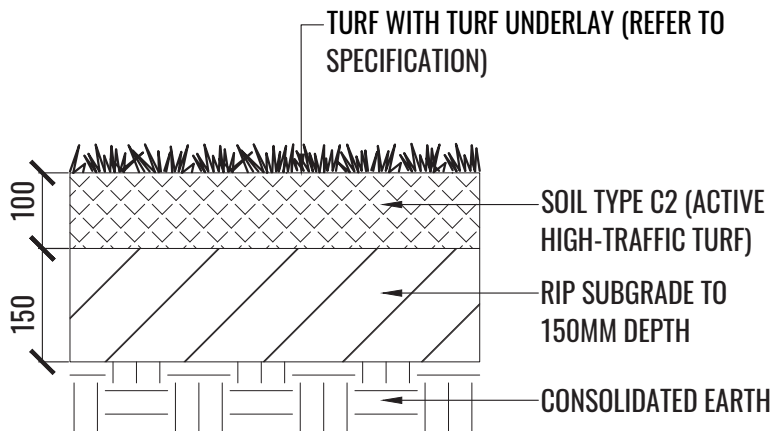
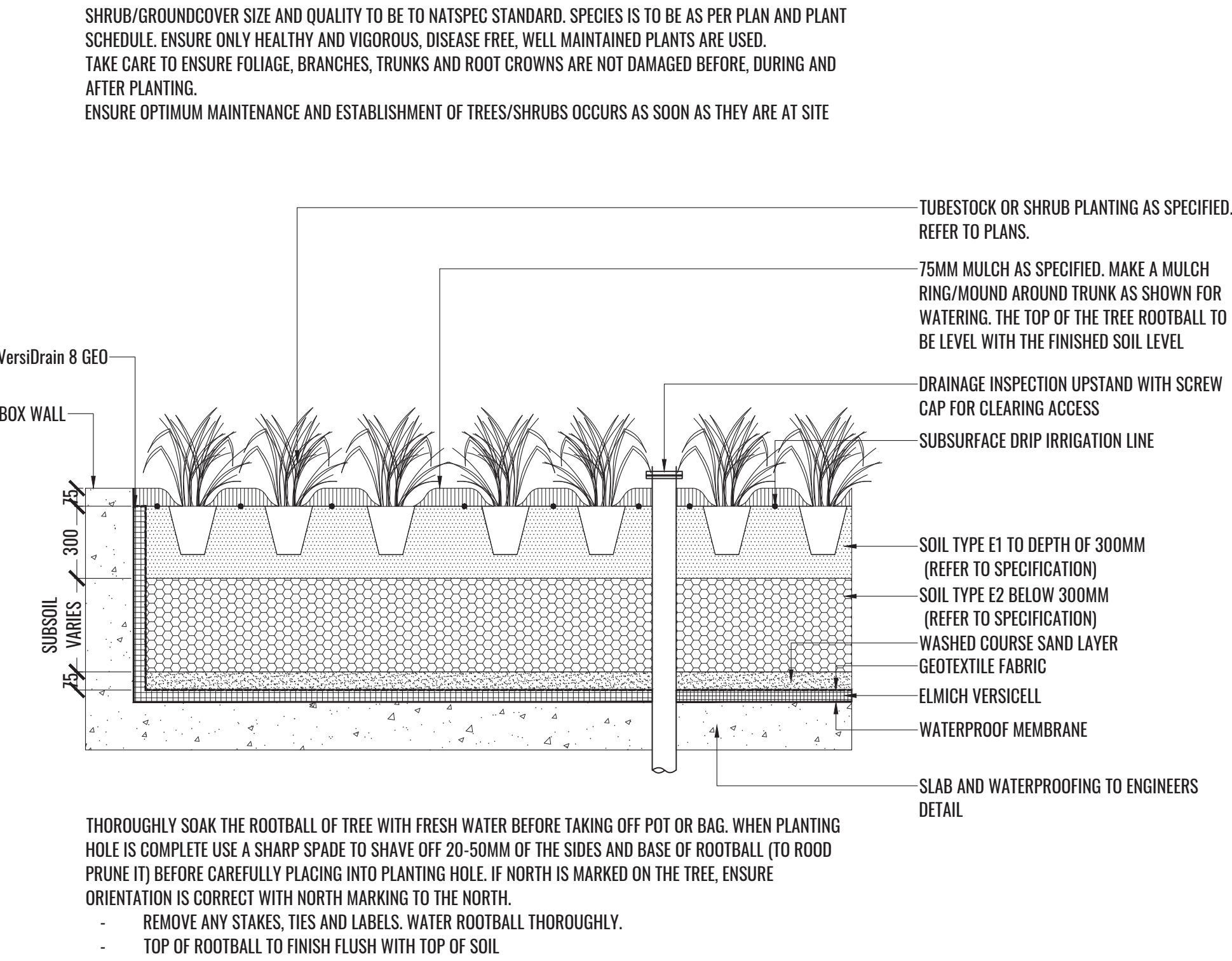
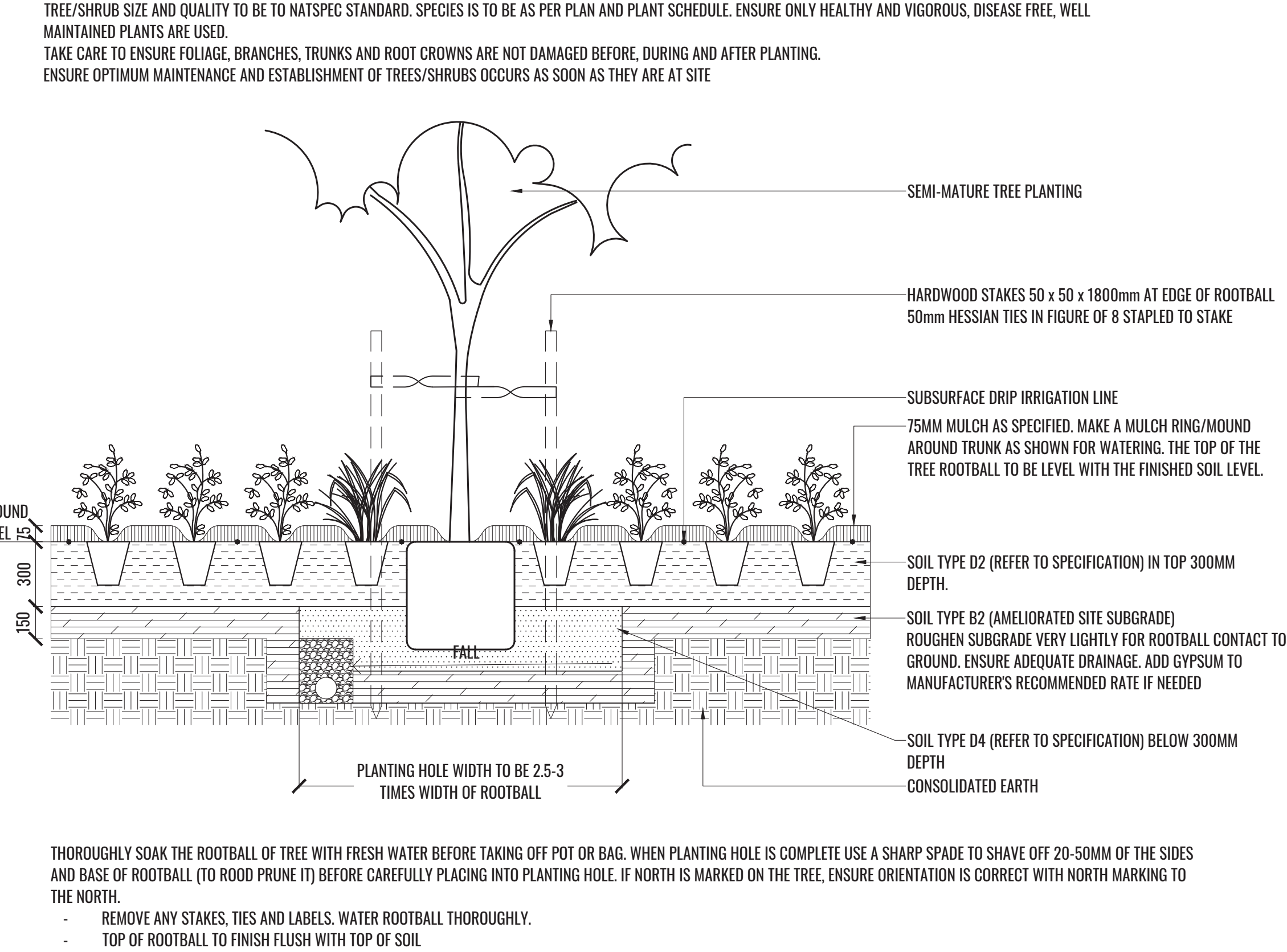
A sub surface dripper style, electrically automated self timed irrigation system is recommended to be supplied to all garden bed areas and planter container. Regular checks are to be made to ensure continued successful operation. The Landscape Contractor shall be responsible for coordination and engagement of a specialist irrigation designer and installation contractor to design, supply and install an automatic subterranean drip irrigation system to all raised planter beds.

The irrigation system will need to provide designated landscaped areas with enough water for vigorous healthy plant growth. As a general rule landscaped areas will need 20-25mm, species dependant, of water per week. The landscape Contractor will need to monitor natural rainfall using a rain switch in order to set irrigation flow rates accordingly on a monthly basis.

Standards

All grown or purchased plant stock must conform to all the conditions and requirements given in NATSPEC Guide: Specifying Trees. Soils to be in accordance with AS4419, mulching composts and conditioners to be in accordance with AS4454. Soils should conform to best practice specifications as listed in the Landscape Soils Handbook (Simon Leake & Elke Haege 2017).

TYPICAL LANDSCAPE DETAILS



Revision			FOR DEVELOPMENT APPLICATION		
Rev	Date	Description	Drawn	Checked	
A	21.06.19	FOR DA	SW	BG	
B	08.07.19	FOR DA	SW	BG	
C	04.09.20	REVISED FOR DA	SB	BG	
D	03.08.21	REVISED DA	TW	BG	

PLANTING SCHEDULE

Code	Botanical Name	Common Name	Mature Height	Install Size	Native	Low Water Use*	Spacing	Qty
	TREES							
ELA RET	<i>Elaeocarpus reticulatus 'Prima Donna'</i>	Blueberry Ash	8m	100L	✓	✓	As Shown	11
EUC HAE	<i>Eucalyptus haemastoma</i>	Scribbly Gum	15m	100L	✓	✓	As Shown	3
HYM FLA	<i>Hymenosporum flavum</i>	Native Frangipani	8m	45L	✓		As Shown	5
LAG NAT	<i>Largestroemia indica x L. faurei 'Natchez'</i>	White Crepe Myrtle	4m	100L		✓	As Shown	5
LAG SIO	<i>Largestroemia indica x L. faurei 'Sioux'</i>	Pink Crepe Myrtle	4m	100L		✓	As Shown	7
MEL AZE	<i>Melia azedarch</i>	White Cedar	10m	100L	✓	✓	As Shown	4
	SHRUBS							
BUX mic	<i>Buxus microphylla var. microphylla</i>	Dwarf Japanese Box	0.5m	200mm			500mm ctrs	67
COR alb	<i>Correa alba 'Coastal Pink'</i>	Coastal Pink Correa	2 m	200mm	✓	✓	1500mm ctrs	25
CON cne	<i>Convolvulus cneorum</i>	Silver Bush	0.4-0.5m	200mm		✓	500mm ctrs	30
EUO tom	<i>Euonymus japonicus microphyllus 'Tom Thumb'</i>	Spindle Bush	0.6m	200mm			300mm ctrs	75
GRE ros	<i>Grevillea rosmarinifolia</i>	Rosemary Gevillea	2 m	200mm	✓	✓	1000mm ctrs	10
HYM nug	<i>Hymenosporum flavum 'Gold Nugget'</i>	Dwarf Native Frangipani	0.5-0.6m	200mm	✓		500mm ctrs	120
SYZ aus	<i>Syzygium australe 'Bush Christmas'</i>	Bush Christmas Lilly Pilly	2 m	200mm	✓	✓	1500mm ctrs	10
SYZ str	<i>Syzygium australe 'SAN01'</i>	Straight and Narrow™ Lilly Pilly	2 m	200mm	✓	✓	1000mm ctrs	73
WES gem	<i>Westringia fruticosa 'Blue gem'</i>	Native Rosemary	1.0-1.5m	200mm	✓	✓	750mm ctrs	8
WES gre	<i>Westringia fruticosa 'Grey Box'</i>	Westringia Grey Box	0.45m	200mm	✓	✓	450mm ctrs	8
	GRASSES AND GROUNDCOVERS							
ANI bus	<i>Anigozanthos 'Bush Ranger'</i>	Kangaroo Paw	0.5m	140mm	✓	✓	4/m2	5
ANI gol	<i>Anigozanthos 'Gold Velvet'</i>	Kangaroo Paw	0.5m	140mm	✓	✓	4/m2	41
ASP fla	<i>Asplenium flabellifolium</i>	Necklace Fern	0.3m	140mm	✓	✓	3/m2	41
AGA blu	<i>Agapanthus orientalis 'Dwarf Blue'</i>	Dwarf Blue African Lily	0.4m	140mm	✓		4/m2	92
BRA ang	<i>Brachyscome angustifolia</i>	Stiff Daisy	0.3m	140mm	✓	✓	3/Lm2	117
DIA bre	<i>Dianella caerulea 'Breeze'</i>	Native Flax Lily	0.6m	Tubestock	✓	✓	5/m2	208
LIR mus	<i>Liriope muscari 'Amethyst'</i>	Giant Liriope	0.5m	Tubestock			5/m2	39
LOM ver	<i>Lomandra longifolia 'Verday'</i>	Lomandra	0.5m	Tubestock	✓	✓	5/m2	40
PEN alo	<i>Pennisetum alopecuroides 'Pennstripe'</i>	Swamp Foxtail Grass	0.5 m	Tubestock	✓	✓	5/m2	17
POA lab	<i>Poa labillardieri</i>	Tussock Poa	0.75m	Tubestock	✓	✓	5/m2	171
TRA asi	<i>Trachelospermum asiaticum 'Flat Mat'</i>	Flat Mat	0.4m	140mm		✓	3/m2	73
VIO hed	<i>Viola hederacea</i>	Native Violet	0.3m	140mm	✓	✓	8/m2	1367
	CLIMBERS & TRAILING PLANTS							
CLE art	<i>Clematis aristata</i>	Old Man's Beard	Creeper	140mm	✓	✓	500mm ctrs	121
DIC sil	<i>Dichondra argentea 'Silver Falls'</i>	Silver Falls Dichondra	Trailing	140mm	✓		7/m2	33
* Low water use plants as per Sydney Water Plant Selector								

PLANT IMAGES



Eucalyptus haemastoma



Largestroemia indica x L. faurei 'Natchez'



Grevillea rosmarinifolia



Pennisetum alopecuroides 'Pennstripe'



Syzygium australe 'Bush Christmas'



Westringia 'Blue gem'



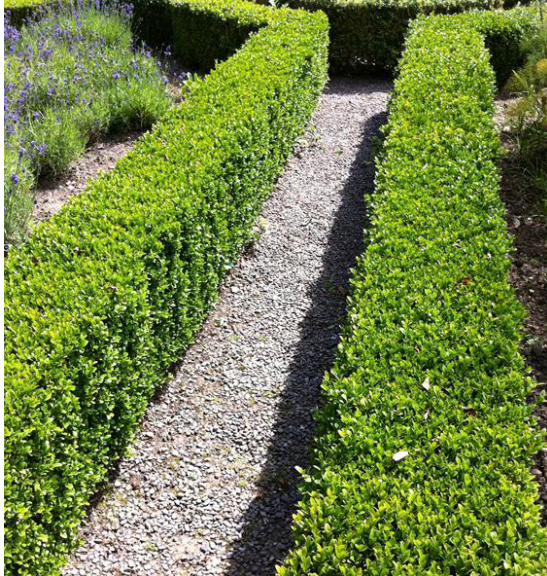
Westringia 'Grey Box'



Anigozanthos 'Bush Ranger'



Anigozanthos hybrid 'Gold Velvet'



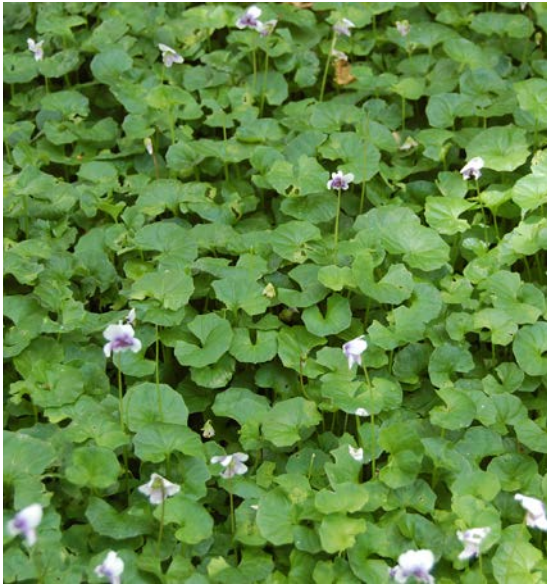
Buxus microphylla var. microphylla



Brachyscome angustifolia



Euonymus japonicus microphyllus 'Tom Thumb'



Viola hederacea



Liriope muscari 'Amethyst'



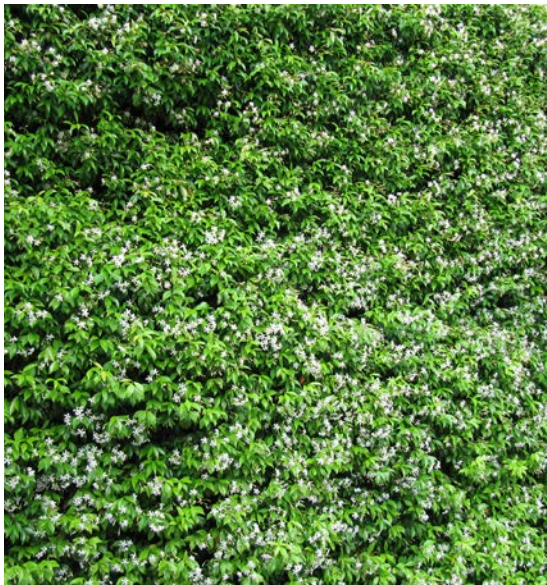
Lomandra longifolia 'Verday'



Hymenosporum flavum 'Gold Nugget'



Poa labillardieri



Trachelospermum asiaticum 'Flat Mat'



Convolvulus cneorum



Agapanthus orientalis 'Dwarf Blue'